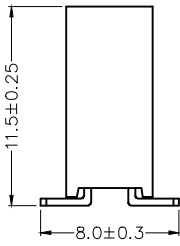
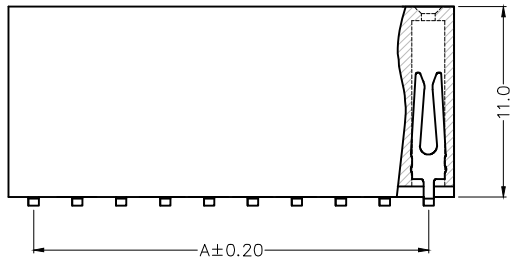
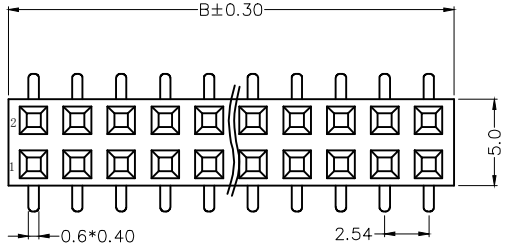


| REV | LOCATIONS | DESCRIPTION | DATE | REVISER | APPD |
|-----|-----------|-------------|------|---------|------|
| | | | | | |

SPECIFICATIONS

Electrical
 Current Rating: 3A AC(rms)/DC
 Voltage Rating: 250V AC(rms)/DC
 Contact Resistance: 20 mΩ Max
 Insulation Resistance: 1000 MΩ Min
 Withstanding Voltage: 500V AC r.m.s
 Temperature Range-Operating: -40°C~+105°C

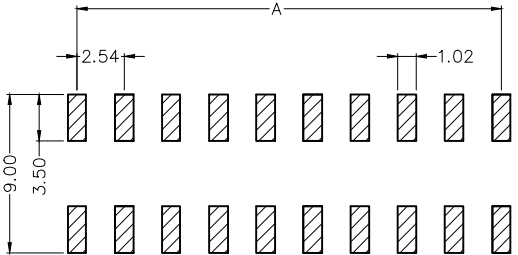
Material and Plating
 Housing: Glass Filled Polyester (UL 94V-0)
 Contact Pin: Brass
 Plating: Gold Plated



Ordering Information

FFH 254 62 - D XX S 1 XX 4 BK K
 1 2 3 4 5 6 7 8 9 10 11

| | | | | | |
|---------------------------------|---|----------------------------|------------------------------|------------------------|----------------------------------|
| 1 Category FFH-Female Header | 2 Series Number 254-Pitch2.54mm | 3 Distinction No. 62 | 4 Row Option D-Double row | 5 Circuits XX | 6 Entry Angle S-180° Vertical |
| 7 Plating 1-Gold plated | 8 Thickness of Plating 00-Gold Flash 01-0.025μm Custom plate available | 9 Material-Resin 4-PA6T | 10 Color-Resin BK-Black | 11 Packaging K-Tray | |



Recommended P.C.Board Layout
 General tolerances: ±0.05

| | | | | | | | |
|-------------------------------|---------------------------------------|-------------|----------------------|-------------------|--|----------------------|---------------------------|
| <p>THIRD ANGLE PROJECTION</p> | GENERAL TOLERANCES (UNLESS SPECIFIED) | | APPROVE BY FRANK | DATE 08/APR/22 | PART NO. FFH25462-DXXS1XX4BKK | ITEM NO. FFH25462 | <p>Leader Of Industry</p> |
| | X. ±0.30 | X.* ±5° | CHECKED BY CHERRY | DATE 08/APR/22 | TITLE Board to Board(Female Header) Pitch 2.54mm 180° Vertical(STM) | | |
| DESIGN UNITS Metric | X.X ±0.20 | X.X* ±2° | DRAWN BY MATT | DATE 08/APR/22 | THIS DRAWING CONTAINS INFORMATION THAT IS PROPRIETARY TO TXGA INDUSTRIAL ELECTRONICS(S.Z)CO.,LTD AND SHOULD NOT BE USED WITHOUT WRITTEN PERMISSION | | |
| SCALE 5:1 | SIZE A4 | X.XX ±0.15 | X.XX* ±1° | | | | |
| | | X.XXX ±0.10 | X.XXX* ±0.5° | | | | |

1 2 3 4 5 6 7 8

| REV | LOCATIONS | DESCRIPTION | DATE | REVISER | APPD |
|-----|-----------|-------------|------|---------|------|
| | | | | | |

A

B



C

D

E

F

| Circuits (n) | Part No. | Dimensions(mm) | | Circuits (n) | Part No. | Dimensions(mm) | |
|--------------|----------------------|----------------|-------|--------------|----------------------|----------------|--------|
| | | A | B | | | A | B |
| 4 | FFH25462-D04S1XX4BKK | 2.54 | 5.58 | 44 | FFH25462-D44S1XXXBKK | 53.34 | 56.38 |
| 6 | FFH25462-D06S1XXXBKK | 5.08 | 8.12 | 46 | FFH25462-D46S1XXXBKK | 55.88 | 58.92 |
| 8 | FFH25462-D08S1XXXBKK | 7.62 | 10.66 | 48 | FFH25462-D48S1XXXBKK | 58.42 | 61.46 |
| 10 | FFH25462-D10S1XXXBKK | 10.16 | 13.20 | 50 | FFH25462-D50S1XXXBKK | 60.96 | 64.00 |
| 12 | FFH25462-D12S1XXXBKK | 12.70 | 15.74 | 52 | FFH25462-D52S1XXXBKK | 63.50 | 66.54 |
| 14 | FFH25462-D14S1XXXBKK | 15.24 | 18.28 | 54 | FFH25462-D54S1XXXBKK | 66.04 | 69.08 |
| 16 | FFH25462-D16S1XXXBKK | 17.78 | 20.82 | 56 | FFH25462-D56S1XXXBKK | 68.58 | 71.62 |
| 18 | FFH25462-D18S1XXXBKK | 20.32 | 23.36 | 58 | FFH25462-D58S1XXXBKK | 71.12 | 74.16 |
| 20 | FFH25462-D20S1XXXBKK | 22.86 | 25.90 | 60 | FFH25462-D60S1XXXBKK | 73.66 | 76.70 |
| 22 | FFH25462-D22S1XXXBKK | 25.40 | 28.44 | 62 | FFH25462-D62S1XXXBKK | 76.20 | 79.24 |
| 24 | FFH25462-D24S1XXXBKK | 27.94 | 30.98 | 64 | FFH25462-D64S1XXXBKK | 78.74 | 81.78 |
| 26 | FFH25462-D26S1XXXBKK | 30.48 | 33.52 | 66 | FFH25462-D66S1XXXBKK | 81.28 | 84.32 |
| 28 | FFH25462-D28S1XXXBKK | 33.02 | 36.06 | 68 | FFH25462-D68S1XXXBKK | 83.82 | 86.86 |
| 30 | FFH25462-D30S1XXXBKK | 35.56 | 38.60 | 70 | FFH25462-D70S1XXXBKK | 86.36 | 89.40 |
| 32 | FFH25462-D32S1XXXBKK | 38.10 | 41.14 | 72 | FFH25462-D72S1XXXBKK | 88.90 | 91.94 |
| 34 | FFH25462-D34S1XXXBKK | 40.64 | 43.68 | 74 | FFH25462-D74S1XXXBKK | 91.44 | 94.48 |
| 36 | FFH25462-D36S1XXXBKK | 43.18 | 46.22 | 76 | FFH25462-D76S1XXXBKK | 93.98 | 97.12 |
| 38 | FFH25462-D38S1XXXBKK | 45.72 | 48.86 | 78 | FFH25462-D78S1XXXBKK | 96.52 | 99.56 |
| 40 | FFH25462-D40S1XXXBKK | 48.26 | 51.30 | 80 | FFH25462-D80S1XXXBKK | 99.06 | 102.10 |
| 42 | FFH25462-D42S1XXXBKK | 50.80 | 53.84 | | | | |

| | | | | | | | | | |
|--|---------------------------------------|-------------|--------------|-----------|--|--|---|----------------------|---------------|
|  THIRD ANGLE PROJECTION | GENERAL TOLERANCES (UNLESS SPECIFIED) | | APPROVE BY | DATE | PART NO. | ITEM NO. |  Leader Of Industry | | |
| | X. ±0.30 | X.* ±5° | FRANK | 08/APR/22 | | | | FFH25462-DXXS1XX4BKK | FFH25462 |
| | DESIGN UNITS Metric | | CHECKED BY | DATE | TITLE | | | REV 0 | SHEET NO. 2/2 |
| | X.X ±0.20 | X.X* ±2° | CHERRY | 08/APR/22 | Board to Board(Female Header) Pitch 2.54mm 180° Vertical(STM) | | | | |
| SCALE 5:1 | SIZE A4 | X.XX ±0.15 | X.XX* ±1° | DRAWN BY | DATE | THIS DRAWING CONTAINS INFORMATION THAT IS PROPRIETARY TO TXGA INDUSTRIAL ELECTRONICS(S.Z)CO.,LTD AND SHOULD NOT BE USED WITHOUT WRITTEN PERMISSION | | | |
| | | X.XXX ±0.10 | X.XXX* ±0.5° | MATT | 08/APR/22 | | | | |

1 2 3 4 5 6 7 8